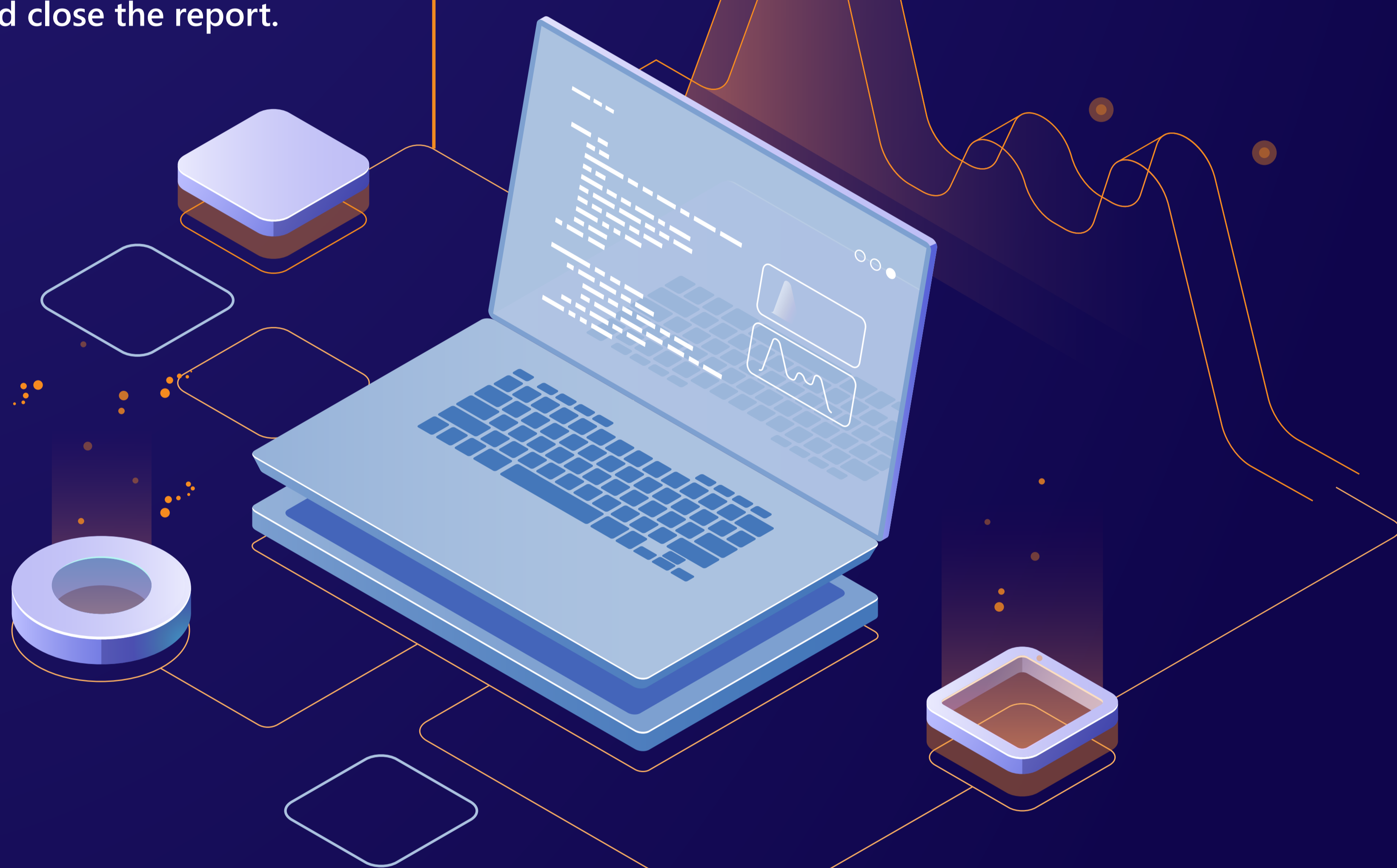


Measuring Power BI Memory Consumption

While using your Power BI desktop to create a new Power BI report, you can use the Windows Task Manager to review the current memory footprint of the report. To do so, follow the following steps:

- A.** Open your report in Power BI Desktop.
- B.** Insert a blank page.
- C.** While in the blank page, save and close the report.

- H.** Wait for the report CPU % to approach zero, which means that it has completed loading it into memory.



- D.** If possible, close all open applications.

- E.** Launch Power BI Desktop again and open the previously saved report.

- F.** Once the report is open, you should be in the blank page that you had added (the report should open to the blank page added in Step B, above).

- G.** Open Windows Task Manager by pressing Ctrl-Alt-Del and selecting Task Manager from the list provided. Expand the Power BI Desktop Group under the process tab.

- I.** Next, navigate to one of the pages where memory consumption is very high due to an underperforming DAX formula.

- J.** Once you've optimized DAX formulas that were causing the memory spike, you can do a side-by-side memory comparison between the initial version and the optimized version.

- K.** Repeat the process as you build new Power BI reports or rework slow reports which will allow you to minimize memory usage and get the most out of your premium capacity tier.